

A NEW FLEA FROM THE MOJAVE DESERT
(CALIFORNIA)

By G. F. AUGUSTSON

Allan Hancock Foundation
University of Southern California

Among some interesting material recently received by the writer from J. C. Couffer of the Los Angeles Museum appears two fleas not only new to science, but in addition representing a genus here before unknown to southern California.

Thanks are due to J. C. von Bloeker, Jr. for his diagnosis of the host involved.

Family HYSTRICHOPSYLLIDAE

Delotelis mohavensis n. sp.

Holotype Female

HEAD. Eye absent; frontal tubercle peg-like, high up on frons, weakly indicated; angle of frons somewhat acute; maxilla acuminate, short; labial palpi equal in length to fore-coxa; preantennal region with five rows of stout bristles, three bristles in lower four rows, five in extreme upper row, a single bristle between rows four and five, one and two; postantennal region with three rows of bristles in all, two in the most anterior row, four in each following row; setae on second segment of antenna one-half the length of the club; no genal ctenidium.

THORAX, ABDOMEN, AND LEGS: Pronotal ctenidium of nine slender spines on a side; eight small teeth on first abdominal tergite only; three antepygial bristles, the middle slightly longer than the equal outer and inner; style long, slender tapering from apex to base with a single, medium, ventro-lateral seta; sternite X flap-like as in *D. telegoni*, broader at its posterior extremity than in *D. telegoni*; sternite VII without a sinus; spermatheca with a broad arm as in *D. telegoni*; tarsi five of all legs with five pairs of lateral plantar bristles and a sixth pair placed mediad to first pair; hind-coxa rather small, without inner patch of bristles or spines.

Allotype Male

HEAD: Labial palpi, maxilla as in female; eye absent; frontal tubercle as in female, somewhat more clearly indicated; bristles of preantennal region as in female; bristles of postantennal region as in female with exception of one less bristle in middle row; no genal ctenidium.

THORAX, ABDOMEN, AND LEGS: Pronotal ctenidium as in female; first abdominal tergite with eight small teeth; three antepygidial bristles, the middle two-thirds longer than the subequal outer and inner; eighth tergite reduced; clasper large, roughly triangular, with one long seta midway along its upper, straight edge, the base of the finger cutting short its posterior angle; finger thumb-like, slender, with two small spiniforms on its upper posterior angle; sternite IX conspicuous, cleaver-shape, with one short, stout bristle on its upper margin; sternite VIII absent; tarsi and rest of legs as in female.

Holotype: A female collected by J. C. Couffer, 10 miles southeast Mojave, Kern County, California, Oct. 5, 1941, from *Neotoma lepida lepida* Thomas. Deposited in the Allan Hancock Foundation, University of Southern California, No. 41-189a.

Allotype: A male, collected and deposited as above.

Type Host: *Neotoma lepida lepida* Thomas.

Type Locality: Mojave, Kern County, California.

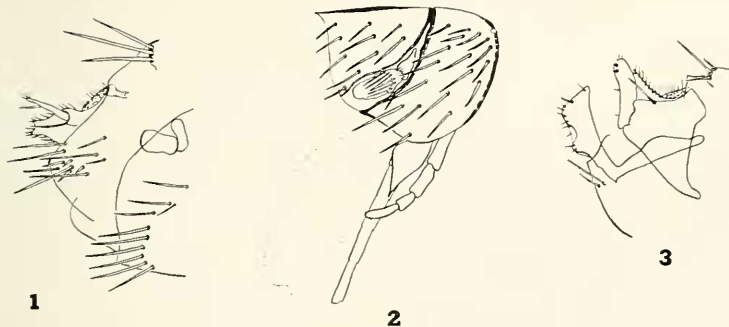


PLATE 15

Fig. 1. *Delotelis mohavensis* Aug., posterior extremity, holotype female.

Fig. 2. *Delotelis mohavensis* Aug., head, holotype female.

Fig. 3. *Delotelis mohavensis* Aug., clasper, finger, sternite IX, allotype male.